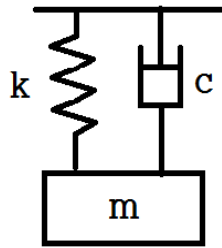


MEC SWCON YANG SUBIN

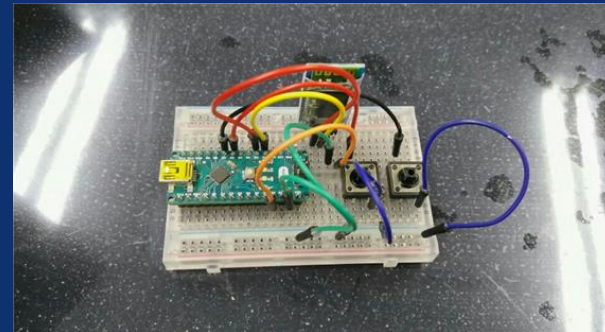
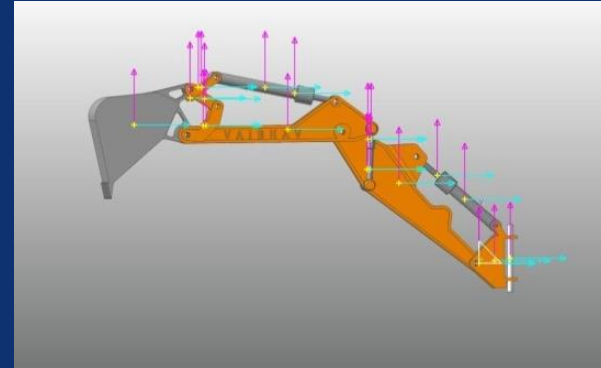
2016100754



YESTERDAY



$$m\ddot{x} + c\dot{x} + kx = F$$



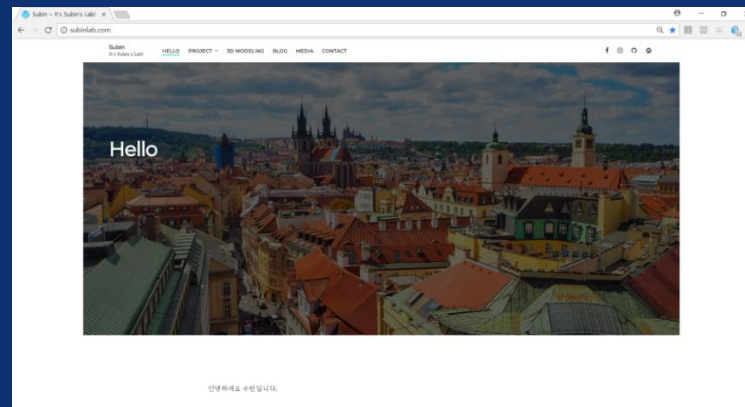
Math / Dynamics / 3D Modeling / Arduino

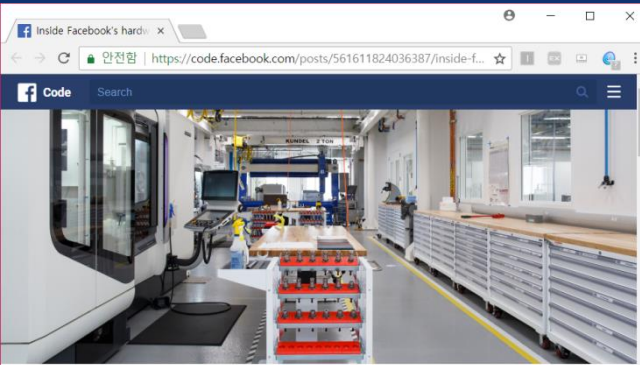
TODAY

```
ros_subin@ros-VirtualBox:~$ sudo rosdep init
[sudo] password for ros_subin:
Wrote /etc/ros/rosdep/sources.list.d/20-default.list
Recommended: please run

rosdep update

ros_subin@ros-VirtualBox:~$ rosdep update
reading in sources list data from /etc/ros/rosdep/sources.list.d
Hit https://raw.githubusercontent.com/ros/rosdistro/master/rosdep/osx-homebrew.yaml
Hit https://raw.githubusercontent.com/ros/rosdistro/master/rosdep/base.yaml
Hit https://raw.githubusercontent.com/ros/rosdistro/master/rosdep/python.yaml
Hit https://raw.githubusercontent.com/ros/rosdistro/master/rosdep/ruby.yaml
Hit https://raw.githubusercontent.com/ros/rosdistro/master/releases/fuerte.yaml
Query rosdistro index https://raw.githubusercontent.com/ros/rosdistro/master/index.yaml
Add distro "groovy"
Add distro "hydro"
Add distro "indigo"
Add distro "jade"
Add distro "kinetic"
Add distro "lunar"
Add distro "melodic"
updated cache in /home/ros_subin/.ros/rosdep/sources.cache
ros_subin@ros-VirtualBox:~$
```





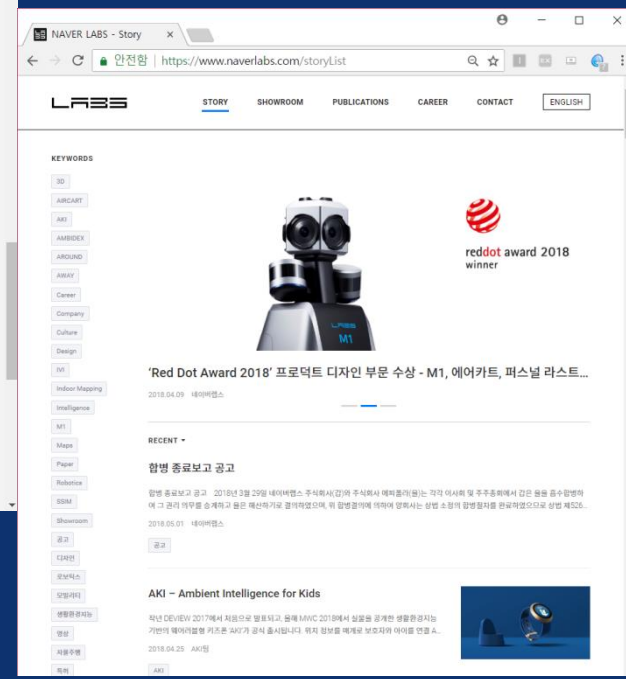
Inside Facebook's hardware labs: Moving faster with more collaboration

Hardware engineering traditionally happens behind closed doors, in isolated labs. We fell into this pattern ourselves early on at Facebook, as we opened individual hardware labs to support new teams. Some of our first labs — including one in a repurposed mail room, in our old Palo Alto headquarters — were built for our Infrastructure teams to prototype custom racks, servers, storage systems, and network switches for our data centers. As new, hardware-oriented teams like Connectivity Lab and Oculus started to form, we built additional labs for those teams to design, prototype, and test. Today we have hardware labs all over the world — from our Oculus facilities in the Seattle area to our Aquila hangar in the U.K. to our laser communications lab in Southern California — as well as a number of custom labs in our Menlo Park office that are used by the Oculus, Connectivity Lab, and Infrastructure

[1]



[2]



[3]

[1] <https://code.facebook.com/posts/561611824036387/inside-facebook-s-hardware-labs-moving-faster-with-more-collaboration/>
 [2] <http://www.kakaobrain.com/blog/17>
 [3] <https://www.naverlabs.com/storyList>

Hardware Lab

THANK YOU